



Sunseeker 76 Yacht - 2162376
£ 4,336,871 Ex Tax



Boat Details

Make
Sunseeker**Model**
76 Yacht**Model Year**
2023**Location**
UK**Max Speed***
32 knots

Engines

Details
2 x MAN V12 1550**Engine HP**
1550**Drive Type**
Shaft Drive**Fuel Type**
Diesel

Dimensions

LOA
23.6m/77ft 5in**Draft**
1.7m/5ft 7in**Beam**
5.95m/19ft 6in**Weight**
53700kg/53.7t

Tankage

Fuel Capacity
6000l**Water Capacity**
1400l**Black Water Capacity**
400l

Accommodation

Cabins
4**Guests**
8 Berth(s)**Heads**
4**Crew Cabins**
1**Crew**
3 Berth(s)

*Performance details are intended as a guide only and are not binding and do not constitute part of any terms and conditions.



Description

The stunning 76 Yacht gives you everything you want from a Sunseeker.

From exceptional sea-keeping, the latest deep-V hull design to the class-leading space throughout the beautifully appointed decks.

Not only does this model cut an impressive silhouette on the horizon, but an expanse of glass and sunlight also welcomes you onboard the 76 Yacht, and the main deck allows you to entertain with an almost 360-degree view of your surroundings.

For 'al fresco' life, the exterior decks provide unprecedented levels of space and flexibility to suit owner needs.

Accommodation

The cockpit can be adapted to include additional lounge seating.

At the stern, enjoy the addition of a mini beach club, complete with a barbecue grill, fold-out seating and a rain shower, perfect for entertaining family and friends.

Make the most of the extended bathing platform, which can accommodate a Williams 445 tender, SeaBobs, and more.

The impressive layout of the 76 Yacht continues on the foredeck, where large twin sunbeds, fore/aft seating and optional refrigeration ensure space maximisation for any social occasion.



Platinum Package

Flybridge composite hardtop, including electric retractable centre canopy and aft electric awning.

Sleipner stabiliser vector fin system.

Hydraulic Telescopic gangway in Stainless steel with teak treads.

Dimmer switches on interior and exterior overhead lighting.

Low level LED side deck lights 10 per side.

Second 27kW Generator with Glendinning Cablemaster.

Flybridge Teak Decking.

Pair of Retractable Cleats for tender on platform.

Additional pair of aft Spring Mooring cleats.

Hydraulic Sleipner Bow thruster 23.3hp and Hydraulic Sleipner Stern Thruster 20hp with Simultaneous dual Proportional controls.

Two Drawer refrigerators under the bow Sunbeds.

Wine cooler in the galley.

Fresh water deck wash system.

Large Grey water storage tank option.

Safe 4 brick with Digital lock for the Master stateroom.

Safe 2 brick with Digital lock for the Forward VIP cabin.

Beach Club Package

Marine Electric Grill fitted in a drop down work station.

Fold down platform seat.

Platform overhead shower fitted to gull wing door.

Main Console Navigation

Simrad IS42 Speed/Depth Instruments with Airmar B744V depth/speed/temperature transducer and Simrad Sonarhub fishfinder Module.

Simrad AP44 Autopilot system.

Two 19" Simrad MO19T displays.

Simrad NSO processor and Simrad OP50 Controller and SD card reader.

Simrad Halo 4 Pulse Compression Radar 64nm 4 foot open array radar scanner.

Simrad RS100 VHF Radio with DSC function with 2.4 metre whip antenna.

Simrad Automatic Identification System NAIS500 Class B AIS Transponder system with dedicated VHF and GPS receiver.

Built in wireless connectivity links the MFD to mobile devices for remote viewing and control.

Flybridge Console Navigation

Simrad IS42 Speed/Depth Instrument.

Simrad AP44 Autopilot system.

Two Simrad NSS16 Evo3S colour 16" Multifunctional touch screen Chart Plotter displays.

Simrad HS100 VHF Radio with DSC function.

Performance AV Package

1. Saloon Samsung 55" UHD Smart 4K Television with Apple TV app and Airplay 2 included. 4K UHD Blu-ray player. Surround system with a Proficient Soundbar powered by a Sonos Amp and Sonos Subwoofer. B&W rear speakers with Sonos Amp.
2. Master stateroom Samsung 55" UHD Smart 4K Television with Apple TV app and Airplay 2 included. 4K UHD Blu-ray player with a Proficient Soundbar powered by a Sonos Amp and Sonos Subwoofer.
3. Forward cabin Samsung 43" UHD Smart 4K Television with Apple TV app and Airplay 2 included. 4K UHD Blu-ray player and a Proficient Soundbar powered by a Sonos Amp.
4. Starboard Guest cabin Samsung 32" HD Smart Television with built in Apple TV App and Airplay. Sonos Amp with Fusion ceiling speakers.
5. Port Guest cabin 24" HD Television with a Sonos Amp with Fusion ceiling speakers. Apple TV.
6. Crew cabin 24" HD Television with Fusion Apollo Radio with Bluetooth and Airplay functionality and Fusion ceiling stereo speakers. Sonos linked to the cabin AV system.
7. Aft Cockpit zone with Four Sonance Extreme Speakers with Sonos Amp.
8. Fly-bridge zone with Four Sonance Extreme Speakers with Sonos Amp.
9. Fore deck zone with Two Sonance Extreme Speakers with Sonos Amp. The exterior zoning audio is controlled via the Sonos App on a supplied iPad tablet. Note. The router is to provide access to the internet via Wi-fi or Cellular data and to allow the user to link to an available marina Wi-fi network. The boat can be fitted with up to 2 SIM cards (user supplied) to access the internet when in range of 3G-4G data signals. This system will give data communications only. Voice

communication is not covered. Air time, service agreements and SIM cards shall be the responsibility of the Client.

Other Extras

Flybridge hard top, sides, undersides and rear canopy to be sprayed Jet Black. Radar Scanner to be sprayed LSA Jet Black and Radar chair equipment including VHF whip aerals to be sprayed Jet Black. (No Warranty Offered) Compass Swinging and adjustment with correction card
Air Conditioning Tropical upgrade to chillers and air handlers 165,000BTU Entertainment Inverter and seamless transfer system. To run the boats entertainment system from the boats DC batteries.
2kW Victron Inverter system to run the boats refrigeration goods including ice maker and optional wine cooler from the boats DC batteries. Two additional dedicated Trojan 100Ah AMG batteries are added.
Separate Miele WCA020 washing machine and Miele TCF640WP tumble dryer in the Crew Cabin
Stainless steel dual voltage Vitrifrigo DW360 DT. Refrigerator above with lower freezer/refrigerator compartment below.
Vitrifrigo stainless steel Ice Maker - Classic Hydro in the Cockpit
Underwater lights - Lumishore TIX202 LED x 8. Four on stern and two either side.
Chrome heated towel rail 700x400mm fitted in the Master, the Forward, the Starboard and the Port Toilet Compartments
Fuel polishing system - Separ FPS-210
Oil change system for engines gearboxes and generators
Engine room access door from Crew cabin. Seaglaze Series 28 Ocean heavy duty watertight door.

Additional

Carbon fibre ensign staff with 32mm tube and high gloss finish with stainless steel head and socket

Taller radar chair to be specified with Sat Domes

Lewmar 50Kg Delta Galvanised Anchor and 90 Metres of 12mm Galvanised anchor chain

Folding back rest for the flybridge forward seating group

Forward flybridge seating group sunbed conversion with a fold out in-fill board and cushion. The in-fill board is supported on a teak coffee table which is on a telescopic leg.

Upholstered bar stools with stainless steel pivoting bases fitted in deck sockets.

Wetbar raised shelf bar top with LED lights

Corner seating group on the forward port side of the cockpit

Teak forward Side Decks to include the anchor deck and Seating group deck

Teak fore deck table with fixed top fitted on a polished stainless steel leg

Covers Package- Aft cockpit seating and Aft cockpit table cover. Foredeck seating, Foredeck sunpad and table covers. Flybridge seating, sunpad, table and helm seat covers.

Optional aft cockpit seating group covers. Corner seat, separate seat base and ottoman.

Fore deck sail canopy with 6 carbon fibre support poles

Interior Wood Finish - Smoked eucalyptus figured high sheen satin finish

Main Deck aft galley option

Two single beds with electrically operated slider to form an occasional double in the Port Mid Cabin

Cadorin Hard Wood Flooring to Saloon dining and helm

In Saloon wooden floor add an inset carpet as detailed in the Saloon inset

carpet info PDF using B - Natural Weave - Square - Ivory 882843 carpet

Saloon and Dining area Headlining panels to be Super White Lacquer 9016 gloss

Upgrade carpet to Jacaranda Hexagon Marl

Fabric upgrade for Helm and Master Sofas to P-ZR-Ocean 10735894

Minotti Bailly 92cm diameter coffee table with Zebrino marble top in saloon starboard side

Forward and starboard cabin vanity stool fabric upgrade

Spradling Hitch premium exterior upholstery upgrade

Upgrade standard venetian blinds to manual Roman Blinds

Full sea and systems commissioning

Movement of Yacht to Port of Shipment for export including necessary paperwork

Class XII safety kit for vessel based on 8 person. Safety kit can be modified to suit use and location of vessel (price may vary).

Williams 395 Sport jet with carbon black tubes, teak and boarding pole (available march 23)

[Click here for 360 Walkthrough](#)











5 - Aft Cockpit



6 - Saloon and Galley



7 - Galley



8 - Galley





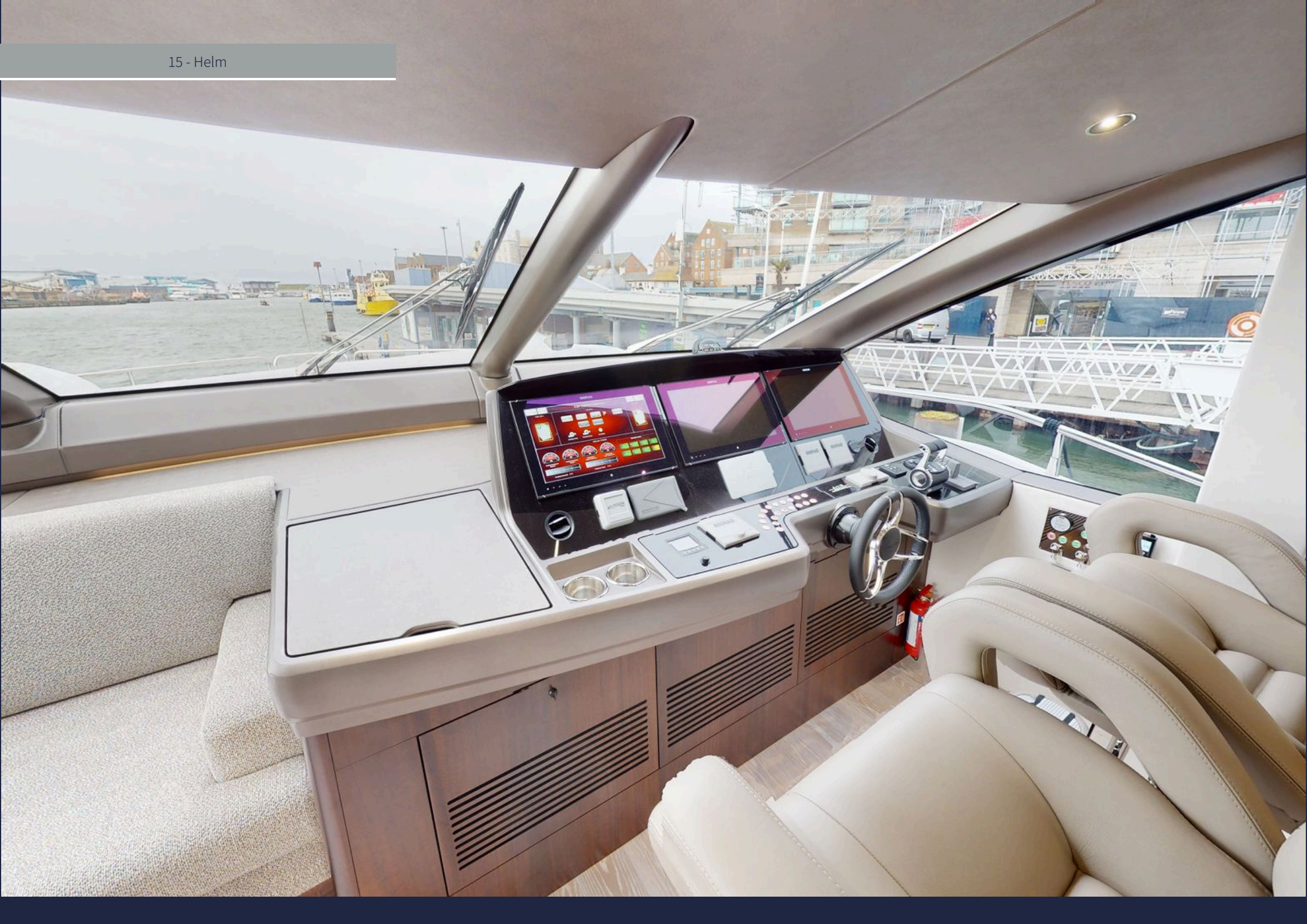












16 - Observation Seat



17 - Master Cabin



18 - Master Cabin



19 - Master Cabin



20 - VIP Cabin



21 - Double Guest Cabin

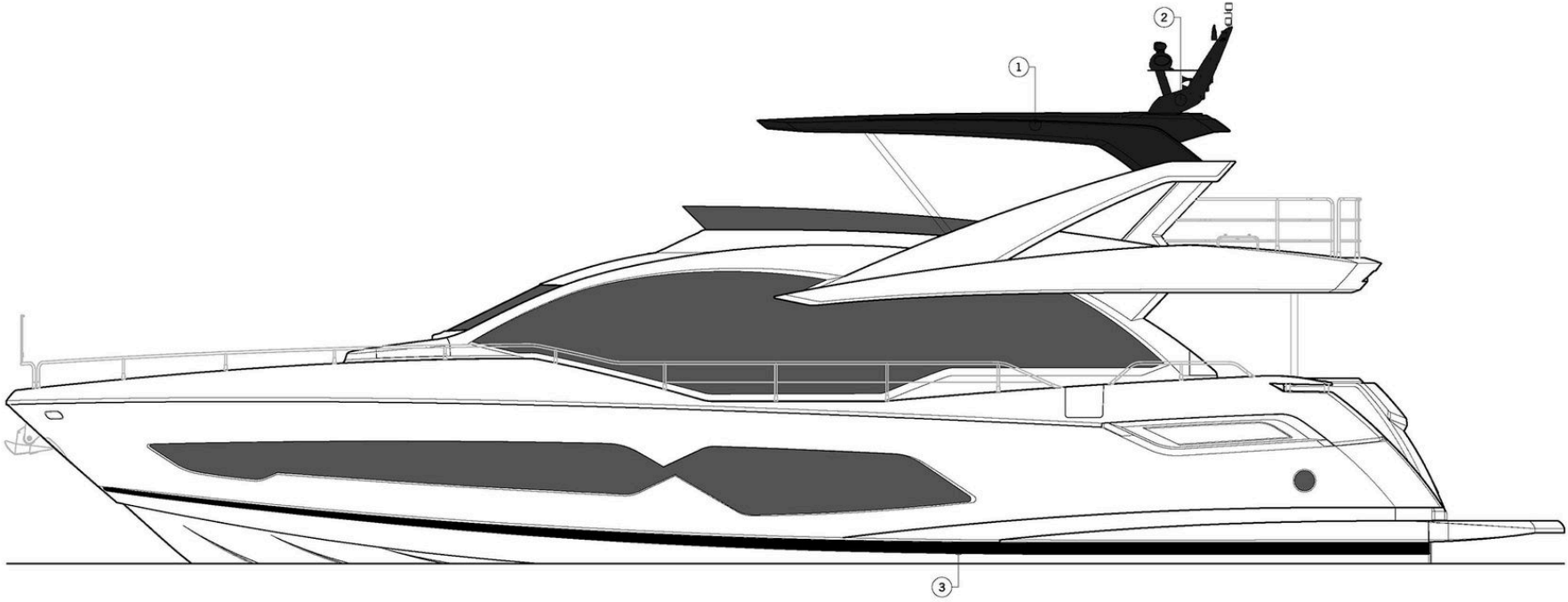


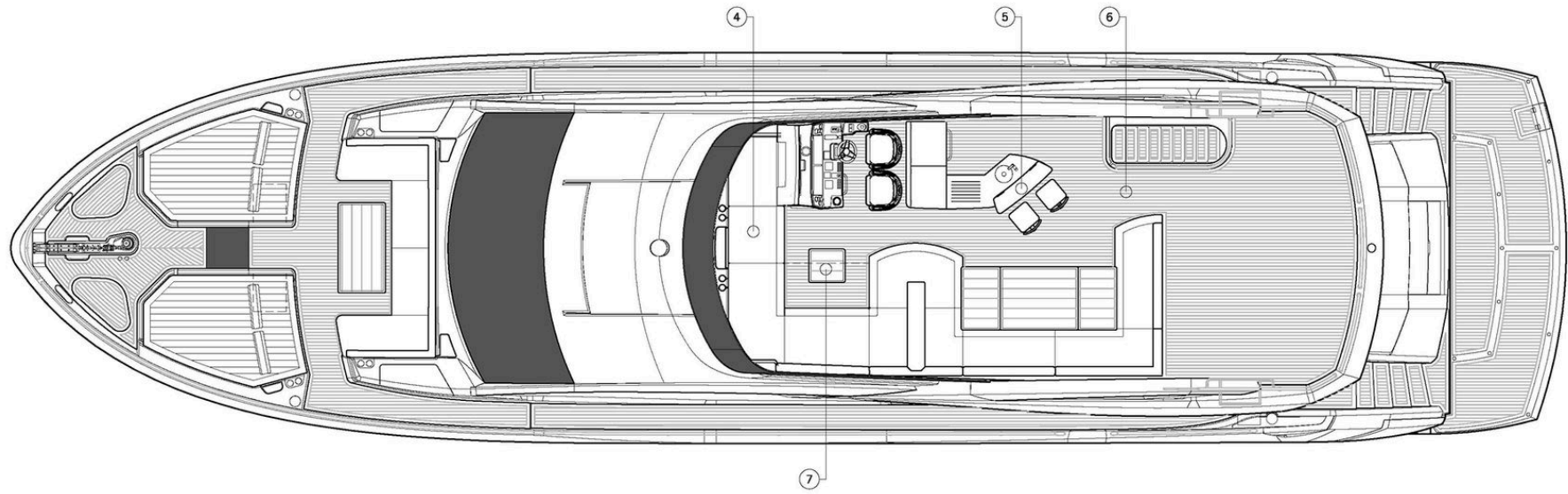
22 - Double Guest Cabin

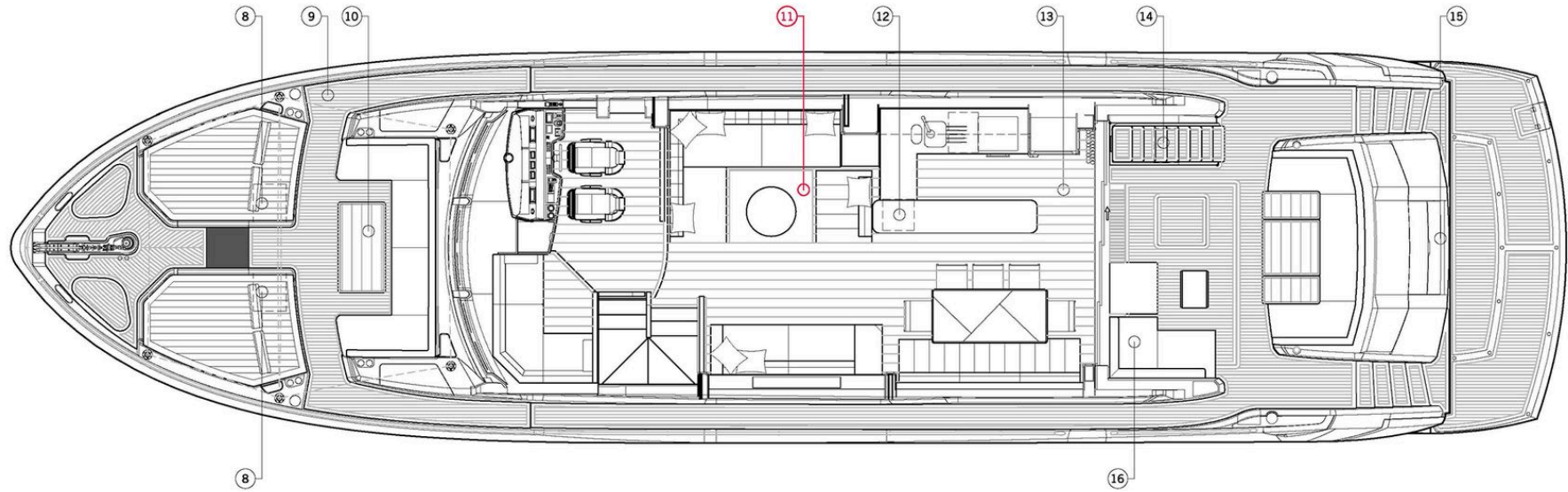


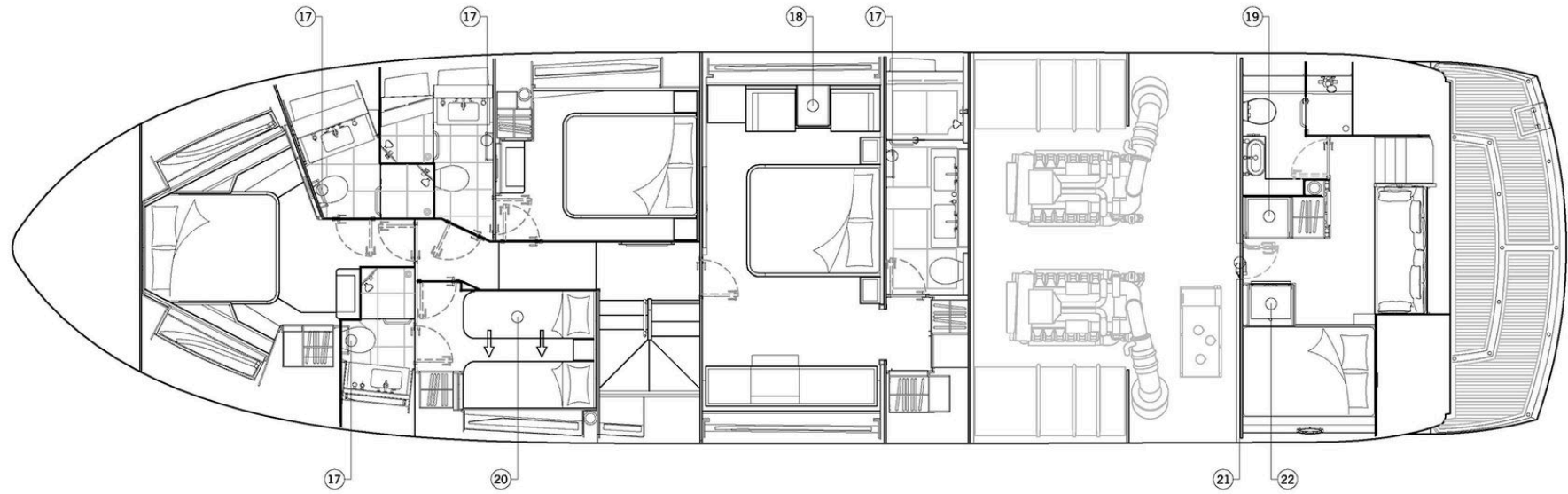
23 - Double Twin Cabin













Your Dedicated Broker

After graduating with BA Hons degree in Maritime and Business Law in 2001, Richard headed to Mallorca to enjoy a summer job with Sunseeker. After a successful summer season with Richard already familiar with boating from a young age and holding a Yachtmaster qualification, he was offered an opportunity in London on a permanent basis to head up the warranty/after-sales department.

Richard developed further client contact through warranty and after sales requests together with the handover/tuition of boats to clients. In 2008 Richard seized the opportunity to head up Sunseeker Greece managing the Greek territories and increasing sales in this area. Gaining experience in managing Sunseeker Greece, 2012 saw Richard acquire the role of Sales Director for Sunseeker Spain enabling him to develop the entire sales network and to further continue his passion for boating in Mallorca and Spain.

Richard Tilley

richard@sunseekerlondon.com
(+44) 7785 347116



London

Sunseeker London, 34-36 Davies Street, Mayfair, W1K 4NF

Tel: +44 (0) 207 355 0980

Web: www.sunseekerlondon.com

Sunseeker London Group presents the information and the details of this Vessel in good faith and does not expressly or impliedly guarantee or warrant the accuracy of this information nor expressly or impliedly warrant the condition of the Vessel. All information and details are intended as a guide only and are not binding and do not constitute part of any terms and conditions. A prospective purchasers should instruct his agents, or his surveyors, to investigate such details in order to validate all information. All prospective purchasers should be aware that the "Manufacturers Model Year" varies from builder to builder and does not necessarily correspond to the Vessel's year of build. This Vessel is offered subject to prior sale, price change, or withdrawal without notice. It is noted that this information may be displayed in various languages; however, the interpretation of the language that shall take precedence shall always be UK English.