



Sunseeker 65 Sport Yacht - 4102265

£ 2,805,499 Ex Tax



Boat Details

Make Sunseeker	Model 65 Sport Yacht	Model Year 2022	Location Spain	Max Speed* 35 knots
--------------------------	--------------------------------	---------------------------	--------------------------	-------------------------------

Engines

Details 2 x Volvo Penta IPS 1350	Engine HP 1000	Drive Type Pod Drive	Fuel Type Diesel	Range 750 Nm
--	--------------------------	--------------------------------	----------------------------	------------------------

Dimensions

LOA 20.5m/67ft 3in	Draft 1.6m/5ft 3in	Beam 5.1m/16ft 9in	Weight 37810kg/37.81t
------------------------------	------------------------------	------------------------------	---------------------------------

Tankage

Fuel Capacity 3500l	Water Capacity 800l	Black Water Capacity 200l
-------------------------------	-------------------------------	-------------------------------------

Accommodation

Cabins 3	Guests 6 Berth(s)	Heads 4	Crew Cabins 1	Crew 2 Berth(s)
--------------------	-----------------------------	-------------------	-------------------------	---------------------------

*Performance details are intended as a guide only and are not binding and do not constitute part of any terms and conditions.



Description

With a sleek exterior profile of carbon fibre and polished stainless steel, the 65 Sport Yacht balances the traditional with hi-tech to place emotion and performance at its heart.

The modular layout allows for a variety of specifications and enhancements, with space that adapts seamlessly to all kinds of socialising and adrenaline-seeking.

Take your Sport Yacht to new heights by carrying the tender on the bathing platform and reconfiguring the vacated space as a dedicated 'Beach Club' – with direct sea access, bar, fridge, BBQ, and free-standing seating. The perfect space for those happiest close to the water.

With speeds of up to 35 knots, the 65 Sport Yacht cuts an equally impressive figure on the open water. Taken all together, the experience is one of pure adrenaline, akin to driving a high performance convertible supercar and absolutely unique.

Accommodation

Three cabins – including a full beam master stateroom – accommodate up to six guests in luxurious comfort, with a fully appointed crew cabin located forward of the garage.



Platinum Mediterranean Package

Sky-helm Second helm with duplicate Nav and engine controls.
Air Conditioning Tropical specification with second shore power inlet.
Generator Onan 17.5kW upgrade.
Flexiteek composite decking on the Sky Deck.
Hydraulic Telescopic gangway with teak grate walkway.
Fresh water deck wash system.
Electric canopy for aft cockpit.
Tender recovery roller system.
Additional aft pair of 12" Spring Mooring cleats.
Upgraded Black Water tank.
Large Grey water storage tank option.
Dimmer switches on interior and exterior overhead lighting.
Bow Sunbathing Cushions with folding back rests.

Performance AV Package

1. Saloon Samsung 55" Smart 4K QLED Television with Apple TV App and Airplay 2 with 4K Blu-ray player. Sonos Amp connecting TV with the built in B&W CCM362 speakers allowing music streaming.
2. Master cabin Samsung 55" Smart 4K QLED Television with Apple TV App and Airplay 2 included. Sonos Amp connecting TV with the built in B&W CCM362 speakers allowing music streaming.
3. Forward cabin Samsung 43" Smart 4K QLED Television with Apple TV App and Airplay 2 included. Sonos Amp connecting TV with the built in B&W CCM362 speakers allowing music streaming.
4. Mid Cabin 24" Smart HD Television with Apple TV. Sonos Amp connecting TV

with the built in B&W CCM362 speakers allowing music streaming.

5. Cockpit Sonos Amp connecting two Sonance VPXT6R marine speakers allowing music streaming. Foredeck Sonos Amp connecting two Sonance VPXT6R marine speakers allowing music streaming. Flybridge Sonos Amp connecting Four Sonance VPXT6R marine speakers allowing music streaming.

Note. The router is to provide access to the internet via Wi-fi or Cellular data and to allow the user to link to an available marina Wi-fi network. The boat can be fitted with up to 2 SIM cards (user supplied) to access the internet when in range of 3G-4G data signals. This system will give data communications only. Voice communication is not covered. Air time, service agreements and SIM cards shall be the responsibility of the Client. iPad mini is included. Network access available throughout the boat. Includes network connection to saloon and all guest cabin TVs.

Other Extras

All Guest Cabins to have Roman Blinds in James Hare Java - 31646/09 BarkJac Silver Frost with Blackout Lining
Carpet upgrade to Havana White Rum
Crew Cabin fit out installation.
Dometic Safe MD 281C concealed in cabinetry (8.2 lts. W280mm x H165mm x D235mm) for the Master Cabin.
Exterior Feature white LED strip lighting along the side deck and fore deck.
Flexiteek composite decking for the side and fore deck (Teak Colour).
Flexiteek composite decking in the Garage space (Teak Colour).
Full sea and systems commissioning
Garmin AIS 800 Class B AIS transceiver.

Additional

Garmin GRM Fantom 24 Radome Radar antenna and GPS19x antenna.

Garmin GSD 25 fishfinder sounder module with through hull depth, temp and speed transducer B744V.

Icemaker - Vitrifrigo IM Classic Hydro in the cockpit.

Icemaker - Vitrifrigo IM Classic Hydro in the Lower Lobby.

Integrated Slimline Dishwasher in the Galley

Interior Upgrade Collection - Fabrics and Linings chosen from the Platinum Collection

Interior Wood Finish - Silver Oak Low build open grain Satin Finish.

Lewmar 40Kg Delta Galvanised Anchor and 90 Metres of 10mm Galvanised anchor chain.

Lobby Stair Risers to be finished in Opti Grey Mirror in Lieu of the standard wood finish.

Marine Electric BBQ kenyon Grill fitted in the wet bar.

Miele WTF121 Washer-Dryer in the Crew area.

Movement of Yacht to Port of Shipment for export including necessary paperwork

Navigation equipment to be sprayed LSA Jet black.

Optional Cockpit wet-bar with sink lieu of Cockpit bar stools.

Optional port side arrangement. Two upholstered seats and central breakfast table.

Preparation for future installation of a Water Maker. Seacock and outlets blanked off. Fresh water feed to tank. Power supply.

Protective Covers Package - Foredeck sunpad and seating cover, aft cockpit sunpad cover, aft cockpit seating cover, aft cockpit table cover, Sky Deck covers.

Raindance garage door overhead platform shower with courtesy lighting.

Seakeeper 16 anti-roll gyro stabiliser.

Sky-light with fixed glass.

Stainless steel heated towel rails in the Master and Forward Toilet Compartment.

Stern docking Winches - TM3 1100 800W 24V capstan fitted port and starboard in the Aft Cockpit.

Sunbrella performance exterior upholstery upgrade

Television to be fitted on a fall and rise lifting system.

Two Volvo Penta Glass Cockpit MFD 16" Multifunctional Colour Radar Chartplotter.

Underwater lights - Lumishore LED x 4 - Dual colour white / Blue

Vitrifrigo Freezer C110BT in the Upper Galley.

Vitrifrigo Refrigerator with freezer compartment in the Lower Lobby

Volvo Penta integrated pilot system for IPS.

Webasto Isotherm Cruise 36 24V 36 litre capacity drawer refrigerator with stainless steel front on the Sky Deck.

Wine cooler for 33 bottles fitted in the lower lobby understairs cupboard

Wood flooring in lower lobby and step to the master cabin and the forward lobby up to the forward cabin door

[Click Here to view 360 Virtual Tour](#)



1 - Exterior



2 - Exterior











7 - Side Deck





9 - Flybridge



10 - Bathing Platform



11 - Aft Cockpit



12 - Aft Cockpit



13 - Aft Cockpit





15 - Saloon











20 - Master Cabin



21 - Master Cabin



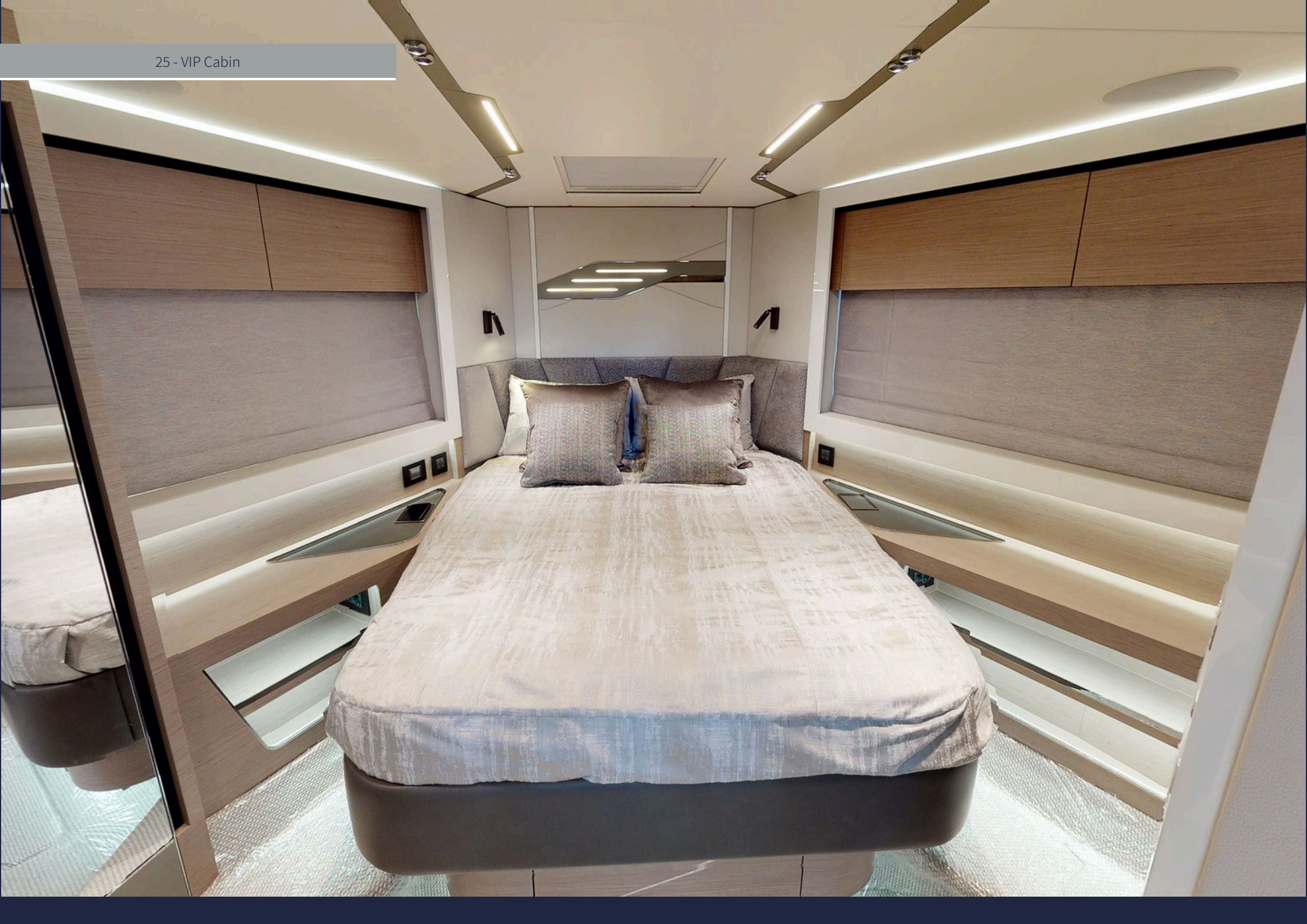
22 - Master Cabin







25 - VIP Cabin

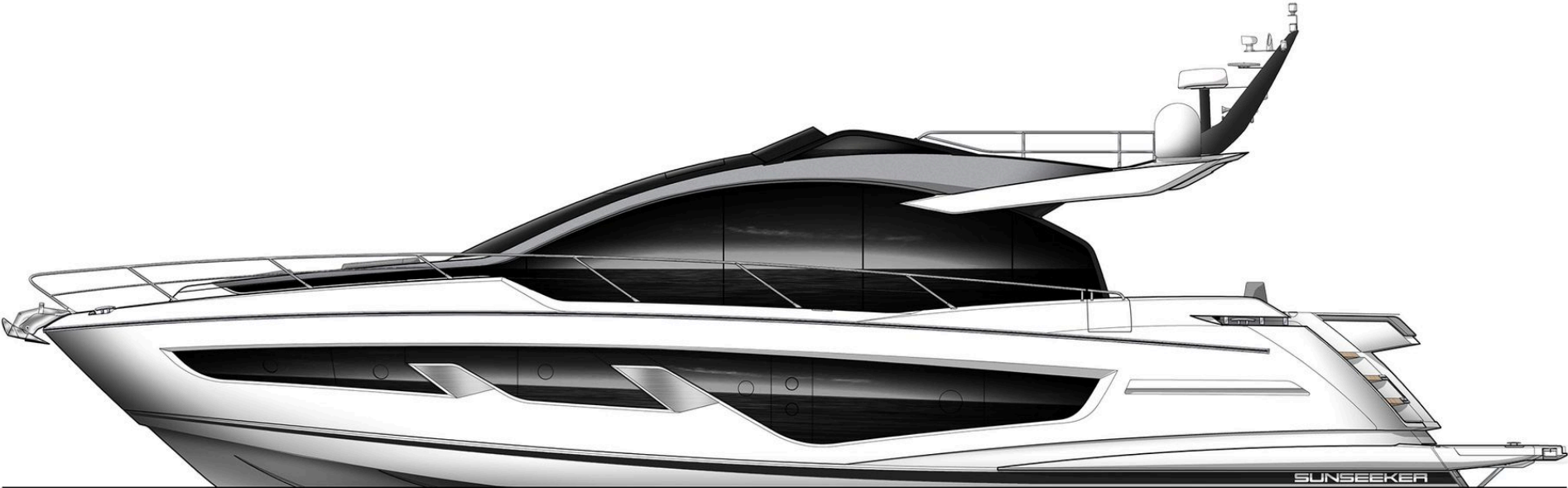


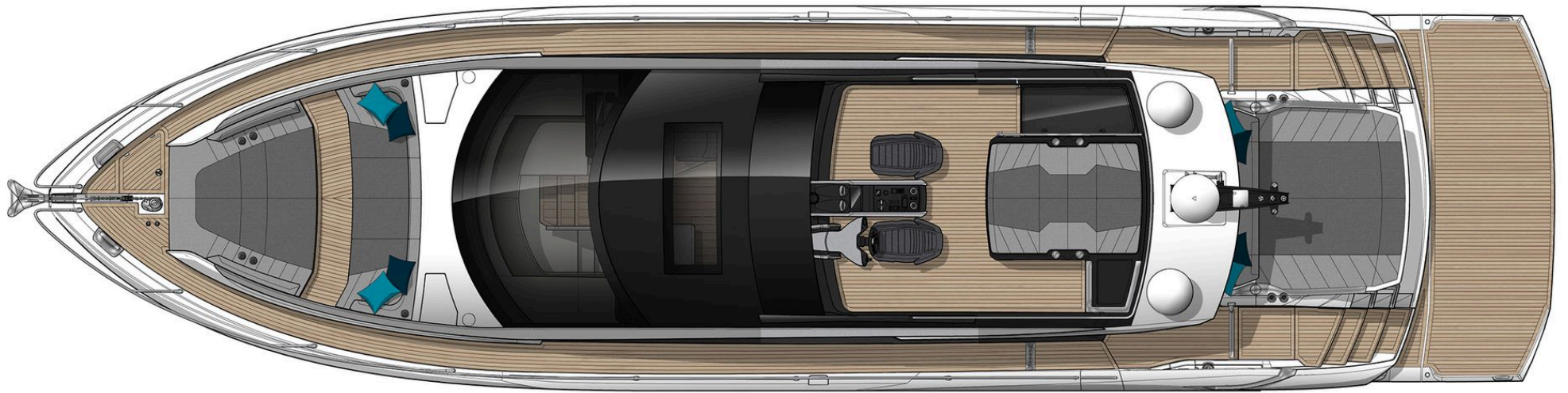


27 - Guest Twin Cabin





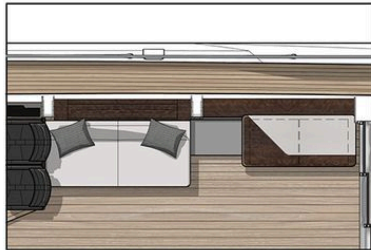




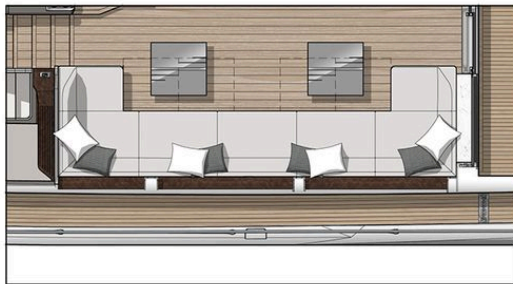
Layout - Main Deck



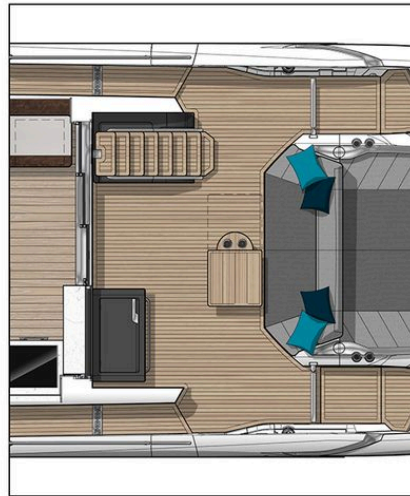
Layout - Main Deck Options



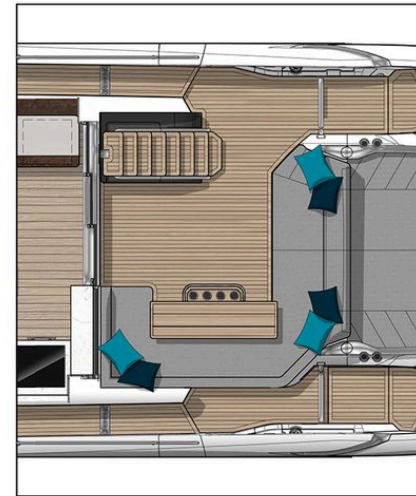
MAIN DECK OPTION
Shown with std side sofa with
rise & fall TV outboard



MAIN DECK OPTION
Shown with extended port side seating to suit
Lower Deck Galley arrangement

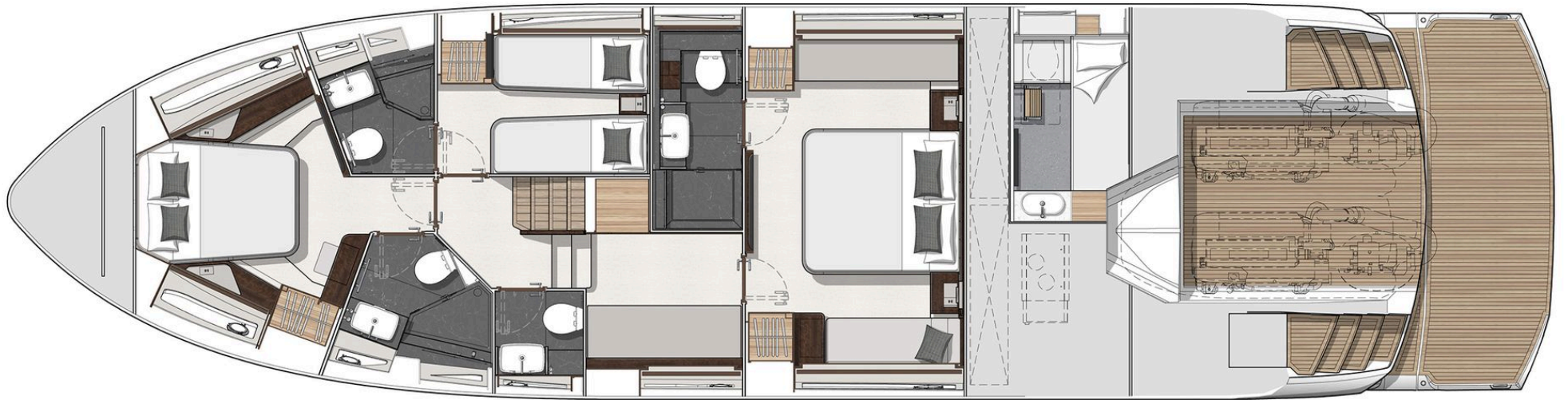


MAIN DECK OPTION
Shown with port side cockpit wetbar



MAIN DECK OPTION
Shown with extended cockpit
seating arrangement

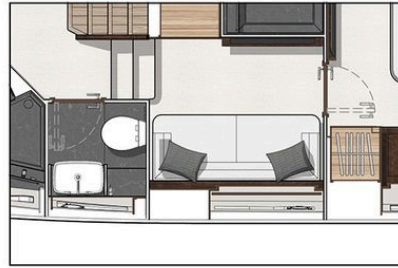
Layout - Lower Deck





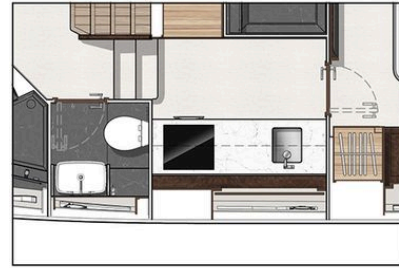
LOWER DECK OPTION

Extended Master Stateroom with entrance office area



LOWER DECK OPTION

Lower Deck Saloon



LOWER DECK OPTION

Lower Deck Galley



LOWER DECK OPTION

Port Single Guest Cabin



Your Dedicated Broker

After graduating with BA Hons degree in Maritime and Business Law in 2001, Richard headed to Mallorca to enjoy a summer job with Sunseeker. After a successful summer season with Richard already familiar with boating from a young age and holding a Yachtmaster qualification, he was offered an opportunity in London on a permanent basis to head up the warranty/after-sales department.

Richard developed further client contact through warranty and after sales requests together with the handover/tuition of boats to clients. In 2008 Richard seized the opportunity to head up Sunseeker Greece managing the Greek territories and increasing sales in this area. Gaining experience in managing Sunseeker Greece, 2012 saw Richard acquire the role of Sales Director for Sunseeker Spain enabling him to develop the entire sales network and to further continue his passion for boating in Mallorca and Spain.

Richard Tilley

richard@sunseekerlondon.com
(+44) 7785 347116



Sunseeker London, 34-36 Davies Street, Mayfair, W1K 4NF

Tel: +44 (0) 207 355 0980

Web: www.sunseekerlondon.com

Sunseeker London Group presents the information and the details of this Vessel in good faith and does not expressly or impliedly guarantee or warrant the accuracy of this information nor expressly or impliedly warrant the condition of the Vessel. All information and details are intended as a guide only and are not binding and do not constitute part of any terms and conditions. A prospective purchaser should instruct his agents, or his surveyors, to investigate such details in order to validate all information. All prospective purchasers should be aware that the "Manufacturers Model Year" varies from builder to builder and does not necessarily correspond to the Vessel's year of build. This Vessel is offered subject to prior sale, price change, or withdrawal without notice. It is noted that this information may be displayed in various languages; however, the interpretation of the language that shall take precedence shall always be UK English.